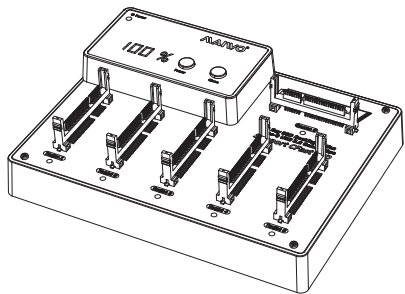


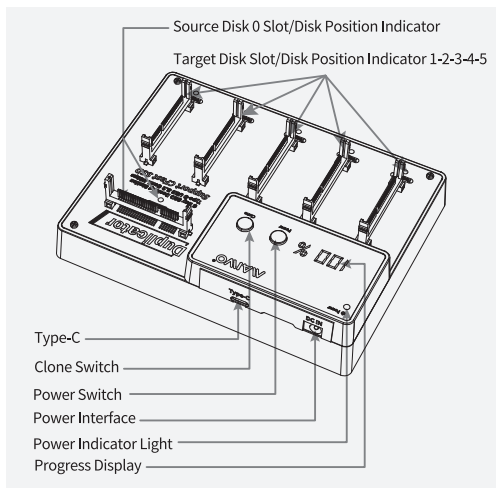


## User Manuals



K3015CF6

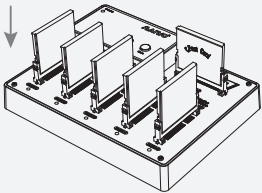
### 6 Bay CFast Memory Card Duplicator



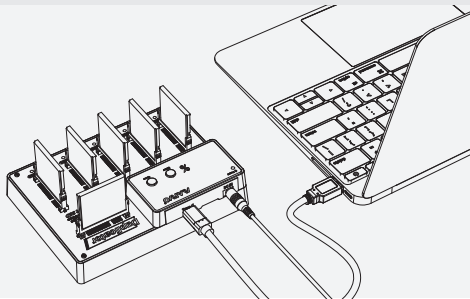
Product Name	MAIWO 6 Bay CFast Memory Card Duplicator
Product Model	K3015CF6
Supported Memory Card	CFast Memory Card
Internal Interface	CFast
External Interface	Type-C
Material	ABS plastic + Aluminum Alloy
Functions	1 to 5 hard drive offline clone; data transmission
Operating Systems	Windows, mac OS, Linux
Indicators Light	Power Indicator Light: Blue light is always on when power is on; Disk Indicator Light: Blue light is on when hard drive is inserted, blinking when reading or writing

### 1. Hard Drive Read/Write Function:

1.1. Insert hard drives into duplicator; connect hard drive duplicator to computer with a data cable.



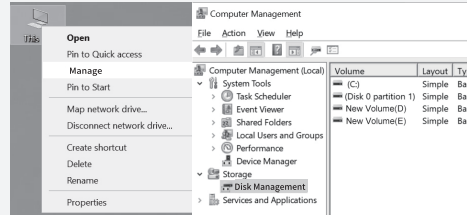
1.2. Connect power supply to hard drive duplicator, turn on hard drive duplicator, at this time the computer will find the hardware and automatically install the USB driver.



Note: If it is an old hard drive, the new hard drive can be found in “Computer” and can be read and written normally. If it is a new hard drive, it needs to be initialized, partitioned and formatted before using.

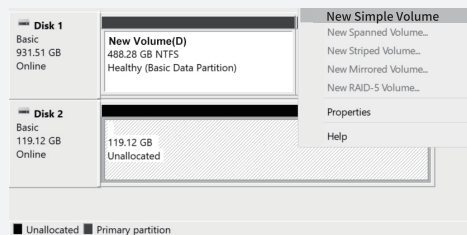
### 2. New hard disk format:

2.1. View “computer - Manage - disk management” to find the new disk .



Note: There are two formats when initialization, please choose MBR if your drives are smaller than 2TB, choose GPT if your drives are larger than 2TB.

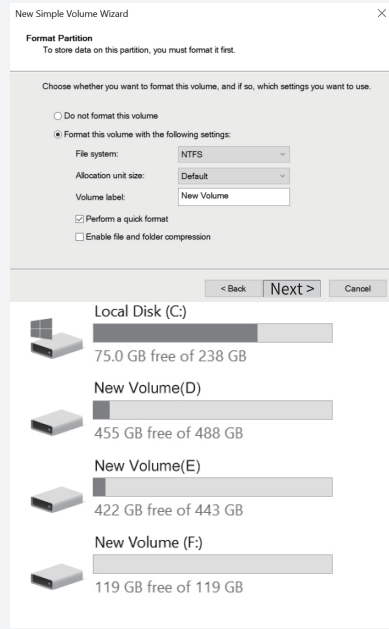
2.2. Right click the “Disk 1” , then click “New Simple Volume” .



### 2. Hard disk partition:

2.3. According to the instruction, choose the size of partition, then click “Next” to finish.

2.4. Then you can find the new hard disk in the “Computer” , it is ready to be use.



### 3. Offline clone:

3.1. Insert source memory card into the source 0 slot and the target memory card into the Target 1/2/3/4/5 slot.

**Note: (1). In clone mode, you can't connect hard drive duplicator and computer with a data cable, otherwise you can't clone it;**  
**(2). The capacity of the target memory card must be greater than or equal to the capacity of the source memory card, otherwise you can't clone it.**

3.2. Turn on hard drive duplicator, at this time the power indicator light is on. Wait for the corresponding memory card indicator light comes on, quickly press the Clone button twice, after the machine buzzer sounds BI for three times, the progress display lights up and shows the progress of cloning; the progress display shows from 1% to 100%; BI.BI.BI three times again, the cloning is completed.

