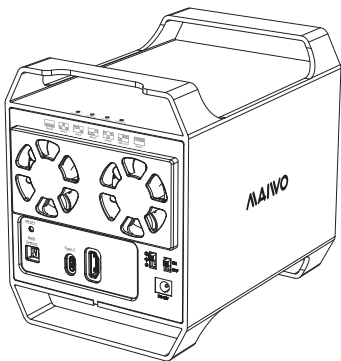


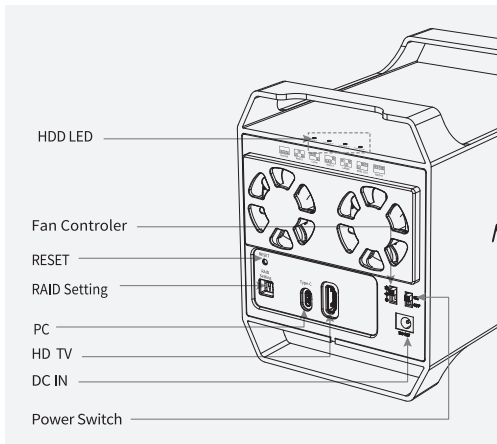
MAIVO[®]

User Manuals



K35284D

4 Bay Hard Drive RAID Enclosure



Item Name	MAIWO 4 Bay Hard Drive RAID Enclosure
Model	K35284D
Interface	Type C+HD TV to SATA
HDD support	3.5" SATA I/II/III
Feature	Hardware RAID 0, RAID 1/10, RAID 3, Normal, RAID 5, LARGE, CLONE
Speed	Max 5Gbps
Material	Aluminum housing
Compatibility	OS: Windows, mac OS, Linux HD TV: Type C device with DP output
HDD LED	Power on blue light; blue light blinks when reading or writing data

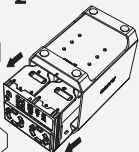
1. Installation & Read / write function:

1.1. Take out the bracket; insert four 3.5 inch HDDs at 10°(note: insert one drive and fix it with silver screw, then install next one); put the bracket with HDDs back into the enclosure, then fix it with black screws.

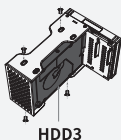
1



2

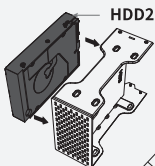


3



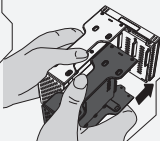
HDD3

4

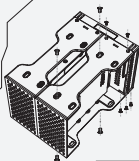


HDD2

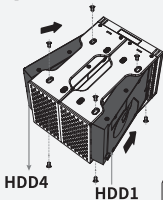
5



6



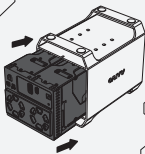
7



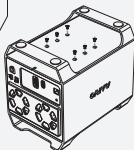
HDD4

HDD1

8

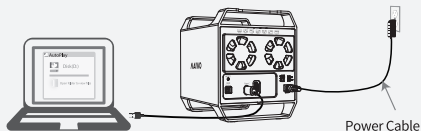


9



2. Connecting with computer:

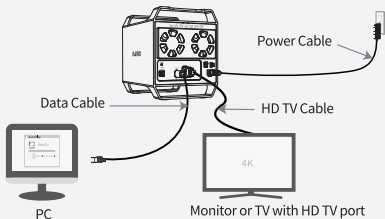
- 2.1. Plug desktop power adapter and power cord with enclosure.
- 2.2. Connect USB cable with enclosure and computer.
- 2.3. Turn on power switch and fans switch.



- * If used hard disk, you could find it from “computer” directly.
- * If new hard disk, you need check it from “disk management”, format and then you can use.

3. Connecting with video device:

- 3.1. Plug desktop power adapter and power cord with enclosure.
- 3.2. Connect USB-C cable with input device(e.g PC, smart phone...)
- 3.3. Connect HD TV cable(exclude in package) with enclosure and display monitor.
- 3.4. Turn on power switch and fans switch.
- 3.5. Set monitor if it is required.



HD TV interface connection matters:
Connect this enclosure with another device through the HD TV port before turn on power, otherwise the HD TV port couldn't work.

4. Setting RAID mode:



Kindly note:

Pls back up the data before you set up/reset the RAID mode, or data will be lost!

Switch RAID mode (Not first time set RAID mode):

Connect data cable and power cable, switch RAID mode to "NORMAL" when power off, press and hold "Reset" button and turn on the power at the same time, release "Reset" button after you heard "Di", RAID mode change to "NORMAL". Then turn off power, change to the RAID mode you want, press and hold "Reset" button and turn on the power at the same time, release "Reset" button after you heard "Di", change RAID mode successfully.

Notes for setting RAID mode in second time:

4.1. RAID 0 mode:



RAID 0

Connect data cable and power cable, switch to RAID 0 mode when power off, press and hold "Reset" button and turn on the power at the same time, release "Reset" button after you heard "Di", change RAID 0 mode successfully.

4.2. RAID 1/10 mode:



Normal



RAID 1/10

Connect data cable and power cable, switch to RAID 1/10 mode when power off, press and hold "Reset" button and turn on the power at the same time, release "Reset" button after you heard "Di", change RAID 1/10 mode successfully.

4.3. RAID 3 mode:



RAID 3

Connect data cable and power cable, switch to RAID 3 mode when power off, press and hold "Reset" button and turn on the power at the same time, release "Reset" button after you heard "Di", change RAID 3 mode successfully.

4.4. RAID 5 mode:



RAID 5

Connect data cable and power cable, switch to RAID 5 mode when power off, press and hold "Reset" button and turn on the power at the same time, release "Reset" button after you heard "Di", change RAID 5 mode successfully.

4.5. LARGE mode:



LARGE

Connect data cable and power cable, switch to LARGE mode when power off, press and hold "Reset" button and turn on the power at the same time, release "Reset" button after you heard "Di", change LARGE mode successfully.

4.6. Clone mode:



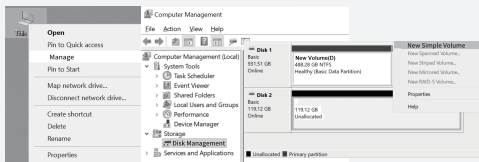
Clone

Connect data cable and power cable, switch to CLONE mode when power off, press and hold "Reset" button and turn on the power at the same time, release "Reset" button after you heard "Di", change CLONE mode successfully.

5. New hard disk format:

5.1. View "computer - Manage - disk management" to find the new disk .

5.2. Right click the "Disk 1" , then click "New Simple Volume" .

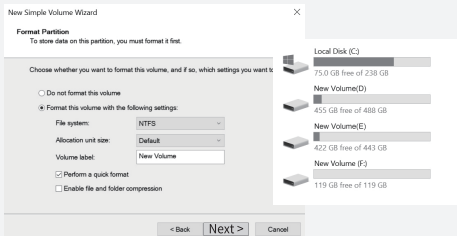


Note: There are two formats when initialization, please choose MBR if your drives are smaller than 2TB, choose GPT if your drives are larger than 2TB.

5. Hard disk partition:

5.3. According to the instruction, choose the size of partition, then click “Next” to finish.

5.4. Then you can find the new hard disk in the “Computer”, it’s ready to be use.



For FAQs and more information please visit:

Email: info@maiwoasia.com

Website: www.maiwoasia.com



Instagram
@MAIWO_Official



Twitter
@MAIWOOfficial



Facebook
@MAIWO