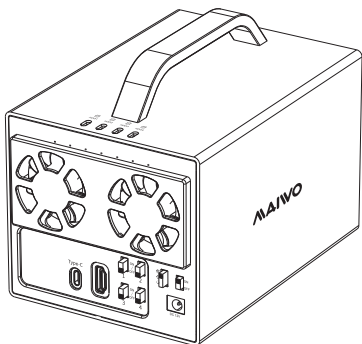


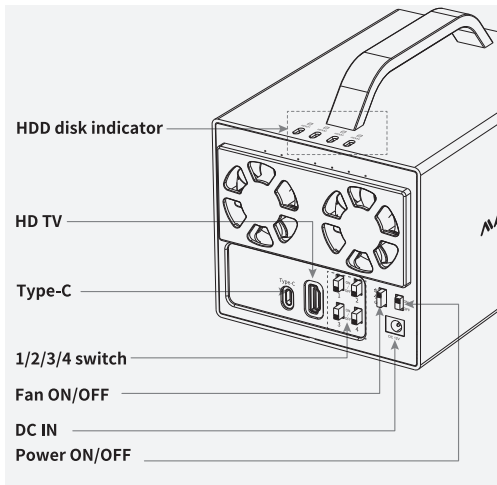
# MAIVO<sup>®</sup>

## User Manuals



K35274A

**4 bay HDD Enclosure**



Item name	MAIWO 4 bay HDD Enclosure
Model	K35274A
Support	3.5 inch HDD
Interface	SATA
Interface	Type-C; HD TV 4K (The HD TV function only supports Type-C devices with DP function to output video)
Materials	Aluminium alloy+Plastic
Function	Data transmission; support RAID 0, RAID 1, RAID0+1, RAID 5 system to form RAID
System	Windows, mac OS, Linux

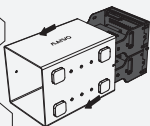
## 1. Installation & Read / write function:

1.1. Take out the bracket; insert four 3.5inch HDDs at 10°(note: insert one drive and fix it with silver screw, then install next one); put the bracket with HDDs back into the enclosure, then fix it with black screws.

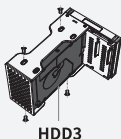
1



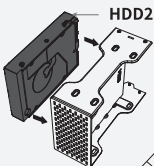
2



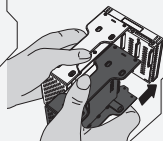
3



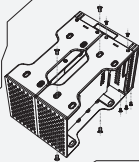
4



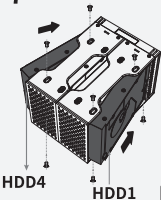
5



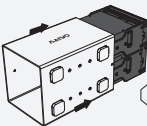
6



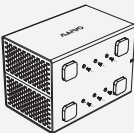
7



8



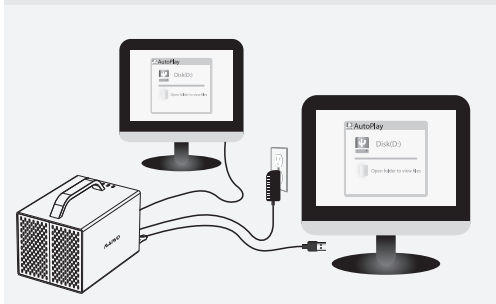
9



## 1. Installation & Read / write function:

1.2. Connect wall-plug power adapter with enclosure.

1.3. Connect USB cable with PC and enclosure, then turn on power switch. (This product's HD TV can be extended with a 4K HD display).



\* If used hard disk, you could find it from “computer” directly.

\* If new hard disk, you need check it from “disk management”, format and then you can use.

## 2. Software RAID set up:



**Kindly note:**  
**Pls back up the data before you set up/reset the RAID mode, or data will be lost!**

Right click on the desktop - start - control panel - system and security - storage space - create storage space  
(Each mode operation is similar to not all demos) RAID 5 demo is as follows (must be windows 8.1/10 Professional and Enterprise Editions and above can implement system RAID).

**RAID 0:** New striped volume - low security, high performance, high capacity, faster transfer experience.

**RAID 1:** New Mirroring - High security, balanced performance, capacity, and secure storage experience.

**RAID 0+1:** More safe, faster speed, available capacity=half of capacity of all disks.

**RAID 5:** Parity - Security Balanced, High Performance, High Capacity, High Performance Experience.

**PM:** Recognize four HDDs separately.

Control Panel > System and Security > Storage Spaces > Create a storage space

Enter a name, resiliency type and size for the storage space

Name and drive letter

Name:

Drive letter: **1**

File system: **2**

Resiliency

Resiliency type:  **3**

**1** A parity storage space writes your data with parity information, helping to protect you from a single drive failure. A parity storage space requires at least three drives.

Size

Total pool capacity: 3.63 TB

Available pool capacity: 3.63 TB

Size (maximum): **4**  TB

Including resiliency: 2.71 TB

**1** A storage space can be larger than the amount of available capacity in the storage pool. When you run low on capacity in the pool, you can add more drives.

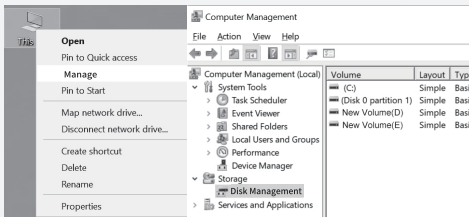
**5**

Create storage space

Cancel

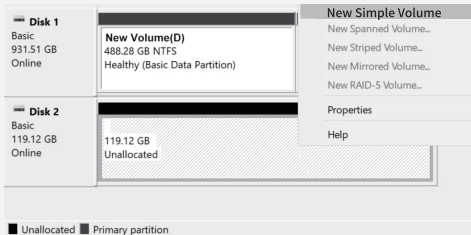
### 3. New hard disk format:

3.1. View “computer - Manage - disk management” to find the new disk .



Note: There are two formats when initialization, please choose MBR if your drives are smaller than 2TB, choose GPT if your drives are larger than 2TB.

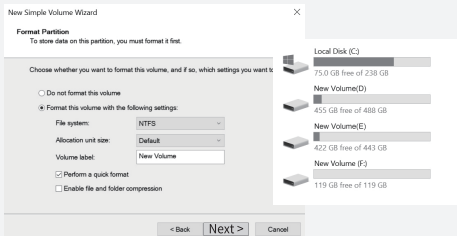
3.2. Right click the “Disk 1” , then click “New Simple Volume” .



### 3. Hard disk partition:

3.3. According to the instruction, choose the size of partition, then click “Next” to finish.

3.4. Then you can find the new hard disk in the “Computer” , it’ s ready to be use.



**For FAQs and more information please visit:**

Email: [info@maiwoasia.com](mailto:info@maiwoasia.com)  
Website: [www.maiwoasia.com](http://www.maiwoasia.com)



**Instagram**  
**@MAIWO\_Official**



**Twitter**  
**@MAIWOOfficial**



**Facebook**  
**@MAIWO**