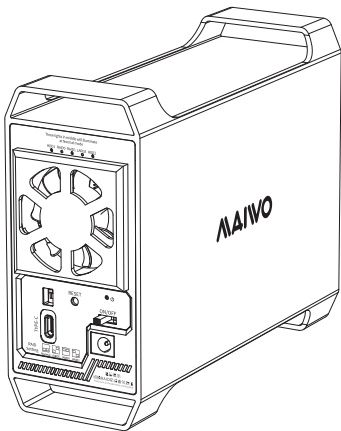


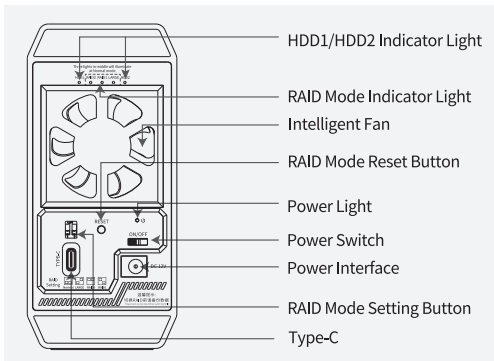
# MAIVO<sup>®</sup>

## User Manuals



K35282CG1

**Dual Bay RAID Hard Drive Enclosure**



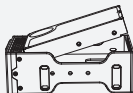
Product Name	MAIWO Dual Bay RAID Hard Drive Enclosure
Product Model	K35282CG1
Transmission Interface	Type-C
Supported Hard Drive	Supports 3.5-inch SATA I/I/III mechanical hard drive
Material	Aluminum alloy + ABS plastic
Supported Systems	Windows, mac OS, Linux
Function	<ul style="list-style-type: none"> <li>• Hard drive reading/writing</li> <li>• Support RAID0/RAID1/Normal/LARGE mode</li> </ul>
Indicator Lights	RAID mode light and power light: Blue light always on after turning on power; Hard Drive Symbol: White light is always on after inserting the hard drive, white light flashes when reading or writing

**Intelligent Fan:** Detect the chassis temperature reaches 28°C fan automatically start work, three minutes of continuous work will be re-tested, if the chassis temperature drops the fan off, if the temperature is still 28°C above the fan will continue to work, three minutes after the test again.

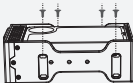
## 1. Installation & Read / write function:

1.1. Remove the middle frame of the HDD enclosure; install 3.5-inch HDDs into HDD1/HDD2 at 10°(Note: After inserting one HDD, use the silver screws to fix the HDDs into the middle frame; then install the next HDD) Install the middle frame with the installed HDDs back into the HDD enclosure; and fix it with the black screws.

(1). Remove the middle frame of the HDD enclosure and insert HDD into the HDD1 middle frame at an angle of 10°.



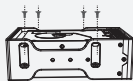
(2). And secure the hard drive from the side with silver screws.



(3). Tilt the hard drive at 10° and insert it into the HDD2 middle frame.



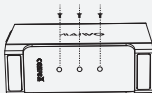
(4). And secure the hard drive from the side with silver screws.



(5). Put the middle frame into HDD enclosure.

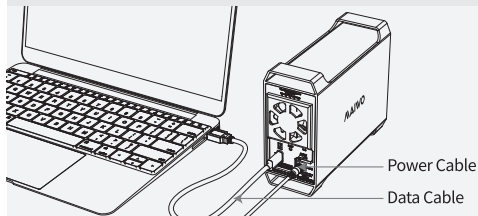


(6). Finally, the three screw holes are secured with black screws.



## 1. Installation & Read / write function:

1.2. After setting the function mode, use the data cable to connect this HDD enclosure with computer; at the same time, insert the power cable; turn it on, and then press and hold the “RESET” button for 5-10 seconds, and release the “RESET” button when the RAID indicator light is on. When the RAID indicator light is on, release the “RESET” button; at this time, the USB driver will be installed automatically in the lower right corner of the computer desktop.



## 2. RAID Mode Formation:



**Tips: Before using the hard drive and switching modes, please back up the data, otherwise the data will be lost, please be careful!**

### 2.1. Normal mode:

Turn on the power, toggle the dial code to the following figure, if the hard drive not shown on the “Computer”, please press and hold the “RESET” for 5-10 seconds, if the setting is successful, three indicator lights will light up at the same time.



## 2. RAID Mode Formation:



**Tips: Before using the hard drive and switching modes, please back up the data, otherwise the data will be lost, please be careful!**

### 2.2. LARGE mode:

Turn on the power, toggle the dial code to the following figure, if the hard drive not shown on the “Computer”, please press and hold the “RESET” for 5-10 seconds, if the setting is successful, “LARGE” indicator lights will light up at the same time.



Note: When one of the SSDs or mechanical disks is damaged and needs to be replaced with a new one, please make sure that the SSD or mechanical disk used to replace it is new or has not been used in RAID before.

### 2.3. RAID1 mode:

Turn on the power, toggle the dial code to the following figure, if the hard drive not shown on the “Computer”, please press and hold the “RESET” for 5-10 seconds, if the setting is successful, “RAID1” indicator lights will light up at the same time.



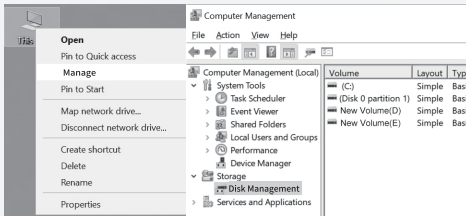
### 2.4. RAID0 mode:

Turn on the power, toggle the dial code to the following figure, if the hard drive not shown on the “Computer”, please press and hold the “RESET” for 5-10 seconds, if the setting is successful, “RAID0” indicator lights will light up at the same time.



### 3. New hard disk format:

3.1. View “computer - Manage - disk management” to find the new disk .



Note: There are two formats when initialization, please choose MBR if your drives are smaller than 2TB, choose GPT if your drives are larger than 2TB.

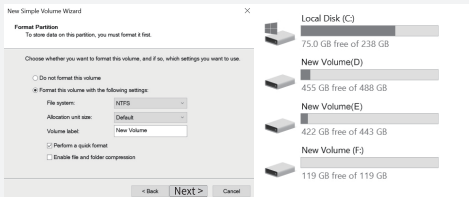
3.2. Right click the “Disk 1” , then click “New Simple Volume” .



### 3. Hard disk partition:

3.3. According to the instruction, choose the size of partition, then click “Next” to finish.

3.4. Then you can find the new hard disk in the “Computer” , it’ s ready to be use.



**For FAQs and more information please visit:**

Email: [info@maiwoasia.com](mailto:info@maiwoasia.com)

Website: [www.maiwoasia.com](http://www.maiwoasia.com)



**Instagram**  
**@MAIWO\_Official**



**Twitter**  
**@MAIWOOfficial**



**Facebook**  
**@MAIWO**