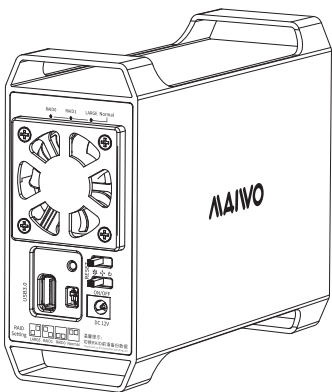


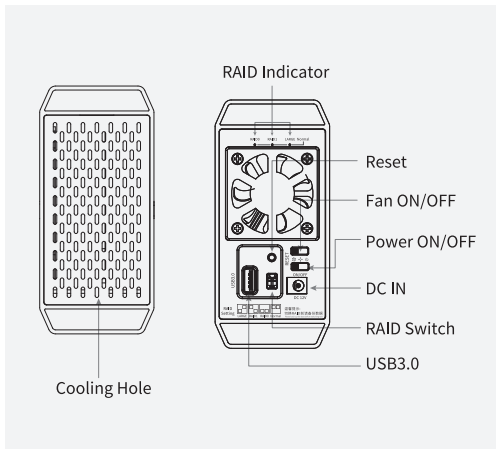
MAIVO®

User Manuals



K35262U3S

Dual bay HDD Enclosure



Item name	MAIWO Dual bay HDD Enclosure
Model No.	K35262U3S
Support	3.5 inch HDD
Interface	SATA
Interface	USB3.0
Materials	Aluminium alloy+Plastic
Function	HDD Read and Write, Support Raid0, Raid1, Large, Normal Mode.
System	Windows, mac OS, Linux

1. Installing the hard drive:

1.1. Take out middle bracket, and install 3.5" HDD or SSD to HDD1/HDD2 (45degree). Fix it with screws when you finish install 1 hard drive, and then install another one.



①. Install HDD1 to middle bracket by 45degree.



②. Fix hard drive with screws from the side.



③. Install HDD2 to middle bracket by 45 degree.



④. Fix hard drive with screws from the side.

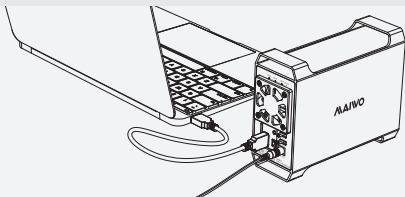


⑤. Install middle bracket back to enclosure.



⑥. Fix it with screws.

1.2. When HDD1/HDD2 LED lights on the sides are illuminate , you can set RAID mode: RAID0/RAID1 or Normal.



* If used hard disk, you could find it from “computer” directly.

* If new hard disk, you need check it from “disk management” , format and then you can use.

2. Setting RAID:



Kindly note:
Pls back up the data before you set up/reset the RAID mode, or data will be lost!

Normal: The default mode is Normal, if you can not find hard disk from computer, keep pressing “RESET” button with tool for seconds till the Normal LED light is illuminate, means that succeed in setting.



RAID0: Change switch button same as below picture, and keep pressing “RESET” button with tool for seconds till RAID 0 LED lights illuminate, means it is succeed in setting.



Tip:When one HDD/SSD is damaged and have another to replace, make sure replaced HDD/SSD is new or formatted with non-RAID before.

RAID1: Change switch button same as below picture, and keep pressing “RESET” button with tool for seconds till the RAID LED light is illuminate, means that succeed in setting.

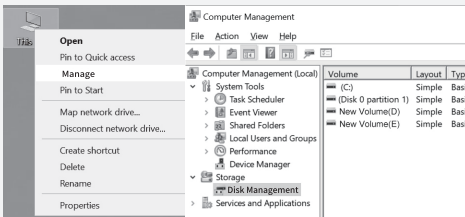


LARGE: Change switch button same as below picture, and keep pressing “RESET” button with tool for seconds till LARGE LED lights illuminate, means it is succeed in setting.



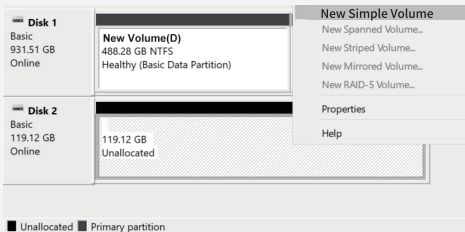
3. New hard disk format:

3.1. View “computer - Manage - disk management” to find the new disk .



Note: There are two formats when initialization, please choose MBR if your drives are smaller than 2TB, choose GPT if your drives are larger than 2TB.

3.2. Right click the “Disk 1” , then click “New Simple Volume” .



3. Hard disk partition:

3.3. According to the instruction, choose the size of partition, then click “Next” to finish.

3.4. Then you can find the new hard disk in the “Computer” , it’ s ready to be use.

New Simple Volume Wizard ✕

Format Partition
To store data on this partition, you must format it first.

Choose whether you want to format this volume, and if so, which settings you want to use.

Do not format this volume

Format this volume with the following settings:


File system:


Allocation unit size:


Volume label:


Perform a quick format

Enable file and folder compression

 **Local Disk (C:)**
75.0 GB free of 238 GB

 **New Volume(D)**
455 GB free of 488 GB

 **New Volume(E)**
422 GB free of 443 GB

 **New Volume (F:)**
119 GB free of 119 GB

For FAQs and more information please visit:

Email: info@maiwoasia.com

Website: www.maiwoasia.com



Instagram
@MAIWO_Official



Twitter
@MAIWOOfficial



Facebook
@MAIWO