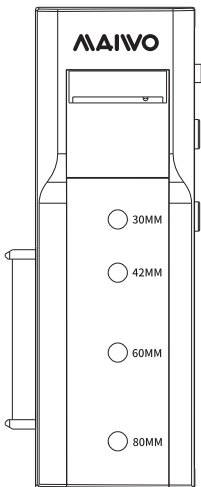


MAIVO[®]

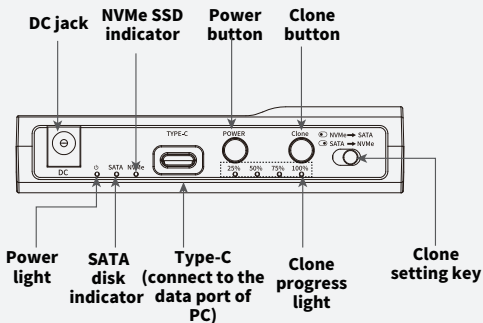
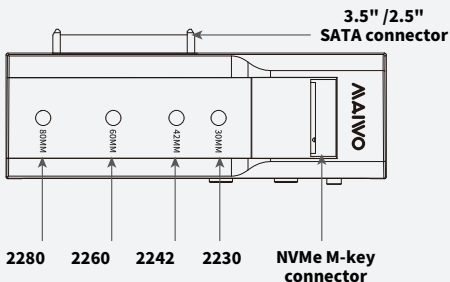
User Manuals



K10635N

**Adapter / Duplicator for 3.5" / 2.5"
SATA HDD/SSD & NVMe M.2 SSD**

Product Introduction:



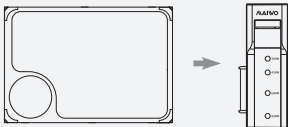
Product Specification:

Product name	MAIWO Adapter / Duplicator for 3.5" /2.5" SATA HDD/SSD & NVMe M.2 SSD
Model	K10635N
HDD/SSD Supported	NVMe M.2 (M-key)2230/2242/2260/2280 SSD, 3.5" /2.5" SATA HDD/SSD
HDD/SSD Bay	2 Bays
External Port	Type-C
Material	ABS Plastic
Function	1:1 offline clone, bidirectional clone (NVMe to SATA, SATA to NVMe), data transmission
Speed	USB3.2 Gen2 x 1, SATA 6Gbps, NVMe 10Gbps
Size	108.4X44.3X24mm
System	Windows, mac OS, Linux
LED light indicator	<ul style="list-style-type: none">• Power light: blue (on when clone & read / write)• HDD/SSD indicator light: white (flash when clone & read / write)• Clone progress light: blue (flash when clone, on when clone finished)

1. 2.5"/3.5" SATA HDD/SSD Installation:

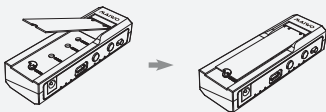
1.1. SATA HDD/SSD Installation:

Push the 3.5" /2.5" SATA HDD/SSD to the SATA port in parallel.

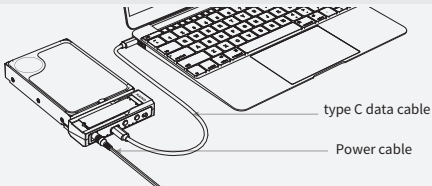


1.2. M.2 NVMe SSD Installation:

Install the silicone screw, insert the SSD to M.2 NVMe slot at 45°, adjust the silicone screw to secure the SSD.



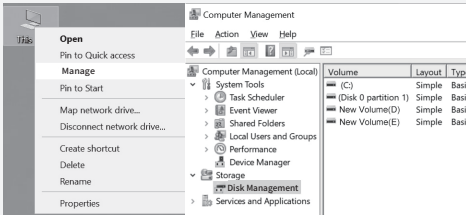
1.3. Plug AC adapter with wall plug and DC jack, then connect USB cable with PC and type C port, following press down power button. power and disk LED lights will illuminate when recognized.



Note: if it is used hard drive, you can find the drive on "computer". If it is new hard drive, need to initialize, partition and format before use.

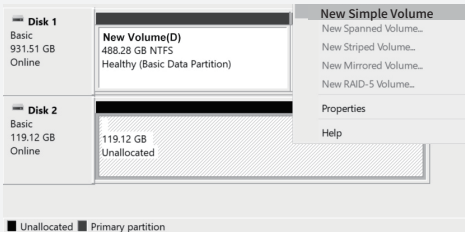
2. New hard disk format:

2.1. View “computer - Manage - disk management” to find the new disk .



Note: There are two formats when initialization, please choose MBR if your drives are smaller than 2TB, choose GPT if your drives are larger than 2TB.

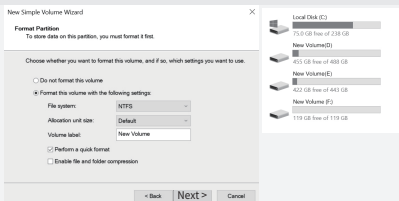
2.2. Right click the “Disk 1”, then click “New Simple Volume”.



2. Hard disk partition:

2.3. According to the instruction, choose the size of partition, then click “Next” to finish.

2.4. Then you can find the new hard disk in the “Computer”, it's ready to be use.



3. Offline clone:

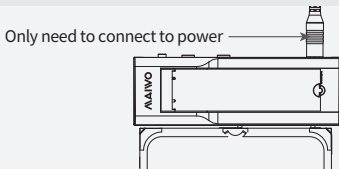
3.1. Push the clone setting key to set the clone mode, as 4.1 / 4.2 schematic diagram shows.

(Note: capacity of source SSD must \leq target SSD, or it can't clone).

3.2. Plug AC adapter with wall plug and DC jack, no need to connect with PC.

3.3. Press down power button, blue power light and white disk lights will illuminate, then keep pressing clone button for about 5s, release it when clone four lights flash, following press clone button one time, means clone strat when LED 25% flash.

3.4. Clone LED 25% will illuminate blue and LED 50% starts flash after clone 25%, four clone LED will illuminate when complete clone.



4. Clone Mode Setting:

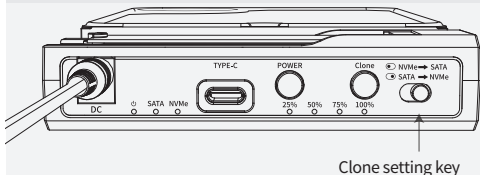
4.1. Clone NVMe SSD to SATA HDD/SSD: Push the clone setting key to left side (as schematic diagram shows), insert the HDD/SSD in, connect to power (don't connect to PC). Press the power button, start offline clone after power-on identification (Refer to 3.3).

NVMe → SATA



4.2. Clone SATA HDD/SSD to NVMe SSD: Push the clone setting key to right side (as schematic diagram shows), insert the HDD/SSD in, connect to power (don't connect to PC). Press the power button, start offline clone after power-on identification (Refer to 3.3).

SATA → NVMe



For FAQs and more information please visit:

Email: info@maiwoasia.com
Website: www.maiwoasia.com



Instagram
[@MAIWO_Official](https://www.instagram.com/MAIWO_Official)



Twitter
[@MAIWOOfficial](https://www.twitter.com/MAIWOOfficial)



Facebook
[@MAIWO](https://www.facebook.com/MAIWO)